

GNIS

RE
FUEL
LING
SYSTEMS

FEMALE VALVES

ATL
Female Valves

1.5" female valve
For tank mounting
ATL refueling valves are FIA approved



Code	Type	Diameter	Mounting
RE-AG-007	single 5 bolt	1,5"	tank

ATL
Female Valves

2" female valves
Mounted on a 1016-9 plate for direct tank mounting.
ATL refueling valves are FIA approved



Code	Type	Diameter	Mounting
RE-AG-009	single, 101,9mm 9 bolt PCD	2"	tank

ATL
Female Valves

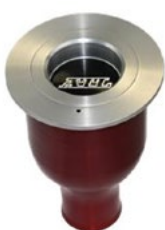
2" female valve
Mounted on plate 1206-12 for tank mounting
ATL refueling valves are FIA approved



Code	Type	Diameter	Mounting
RE-AG-010	single, 120,9mm 12 bolt PCD	2"	tank

ATL
Female Valves

1.5" female valve
Aluminum funnel for 2.25" hose
ATL refueling valves are FIA approved



Code	Type	Diameter	Mounting
RE-AG-008	single, to fit 2,25" hose	1,5"	remote

ATL
Female Valves

2" female valve
Aluminum funnel for 2.25" hose
ATL refueling valves are FIA approved



Code	Type	Diameter	Mounting
RE-AG-012	single, to fit 2,25" hose	2"	remote

ATL
Female Valves

2 female valves 2"
Tank mounting plate (PL-CB-026)
Distance between the centers of the 2 valves = 100 mm
ATL refueling valves are FIA approved



Code	Type	Diameter	Mounting
RE-AG-020	dual, 100mm centres	2"	tank

ATL
Female Valves

2 female valves 2", for 2.25" hose
For remote mounting
Distance between the centers of the 2 valves = 100 mm
ATL refueling valves are FIA approved



Code	Type	Diameter	Mounting
RE-AG-021	dual, to fit 2,25" hose, 100mm centres	2"	remote

ATL
Female Valves

Female 2" valve repair kit

Code	Type	Diameter	Mounting
RE-AA-052	Female valve repair kit	2"	-

ATL
Female Valves

Female 1.5" valve repair kit

Code	Type	Diameter	Mounting
RE-AA-054	Female valve repair kit	1,5"	-

ATL
Male Valves

1.5" male valve For 1.5" hose
ATL refueling valves are FIA approved



Code	Description
RE-AG-002	Ø 1,5" FIA male dry break valve

ATL
Male Valves

2" male valve For 2" hose
ATL refueling valves are FIA approved



Code	Description
RE-AG-003	Ø 2" FIA male dry break valve single

ATL
Male Valves

2 male 2" valves
For 2" female
distance between the centers of the valves = 100 mm
ATL refueling valves are FIA approved



Code	Description
RE-AG-022	Ø 2" FIA male dual dry break valve with handle

ATL
Refuelling Handles



Code	For valve:
RE-AF-008	RE-AG-003

ATL
Male Valves

Ø 2" ATL male valve repair kit

Code	Description
RE-AA-053	Ø 2" ATL male valve repair kit

ATL
Male Valves

Ø 1,5" ATL male valve repair kit

Code	Description
RE-AA-055	Ø 1,5" ATL male valve repair kit

COAXIAL DRY BREAK COUPLINGS



STÄUBLI
Coaxial dry break couplings



Code	Type
SAF45.1838/CX/JKV	coaxial for cars - male



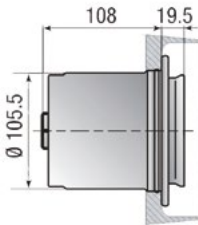
STÄUBLI
Coaxial dry break couplings



Code	Type
SAF45.5000/JV	tank mounted plug - female



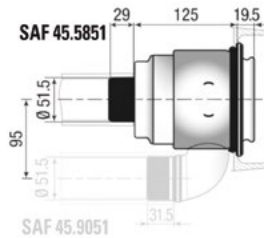
STÄUBLI
Coaxial dry break couplings



Code	Type
SAF45.5000/DN/JV	coaxial drain plug - female



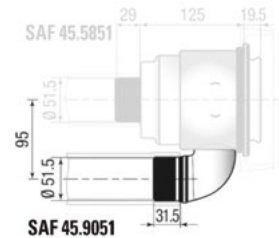
STÄUBLI
Coaxial dry break couplings



Code	Type
SAF45.5851/JV	remote mounted plug - female



STÄUBLI
Coaxial dry break couplings



Code	Type
SAF45.9051	remote mounted female plug separator



REFUELLING BOTTLES



Refuelling bottles

Code	Type	Litres	Angle	Male probe on bottle	Remote vent
RE-AA-023	Single	25	Straight	1 1/2"	No



Refuelling bottles

Code	Type	Litres	Angle	Male probe on bottle	Remote vent
RE-AA-029	Twin	25	135°	2"	Integrated



Refuelling bottles

Code	Type	Litres	Angle	Male probe on bottle	Remote vent
RE-AA-024	Single	25	135°	1 1/2"	No



Refuelling bottles

Code	Type	Litres	Angle	Male probe on bottle	Remote vent
RE-AA-030	Single	25	Straight	2"	STAUBLI SP-T12,1658LJV



Refuelling bottles

Code	Type	Litres	Angle	Male probe on bottle	Remote vent
RE-AA-025	Single	25	Straight	2"	No



Refuelling bottles

Code	Type	Litres	Angle	Male probe on bottle	Remote vent
RE-AA-031	Single	25	135°	2"	STAUBLI SP-T12,1658LJV



Refuelling bottles

Code	Type	Litres	Angle	Male probe on bottle	Remote vent
RE-AA-026	Single	25	135°	2"	No



Refuelling bottles

Code	Type	Litres	Angle	Male probe on bottle	Remote vent
RE-AA-032	Single	25	Straight	2"	ATL 2,0" RE-AG-003



Refuelling bottles

Code	Type	Litres	Angle	Male probe on bottle	Remote vent
RE-AA-027	Twin	25	Straight	1 1/2"	Integrated



Refuelling bottles

Code	Type	Litres	Angle	Male probe on bottle	Remote vent
RE-AA-028	Twin	25	Straight	2"	Integrated



Refuelling bottles

Code	Type	Litres	Angle	Male probe on bottle	Remote vent
RE-AA-033	Single	25	135°	2"	ATL 2,0" RE-AG-003



Refuelling bottles

Code	Type	Litres	Angle	Male probe on bottle	Remote vent
SAF45.1025/JKV	Single	25	Straight	Stäubli standard	Integrated



Refuelling bottles

Code	Type	Litres	Angle	Male probe on bottle	Remote vent
SAF45.1025/RO/JKV	Single	25	135°	Stäubli standard	Integrated



Accessories for bottles

Specification:

- Designed to suit ATL's range of 25L flat-backed refuelling bottles
- Accepts bottles fitted with single and dual probes
- Splits into 2 parts for easy transport



Code	Description
RE-AB-028	Trolley refuelling bottle ATL 25 ltr



Refuelling pumps

Digital litre-counter usually used with the manually rotating refuelling pump (code 989M8)



Code	Description
CL00053	Digital litre-counter



Refuelling pumps

Manual rotation pump for transferring fluids from drums.

Used for non-corrosive fluids such as diesel, kerosene, unleaded petrol, transmission fluid, engine oil, low viscosity oil, antifreeze.

Each spin corresponds to one liter of fuel. Aluminum pump with suction filter included.

Ideal for putting the exact liters in the race car.

FEATURES:

Cap size 2".

Weight 6 kg.

Inlet and outlet pipe M32 x 1.5 mm.

Suction tube (1 mt) and teflon tape included in the kit.



Code	Description
928M8	REDSPEC fuel pour spout with rotating nozzle

FUEL FILLER HOSES



Fuel Filler Hoses



Code	Marque	Diameter	Material	Features	Elbow	Colour	Length	Weight per metre	Ref code
CH39180	Newton	38 mm	Nitrile/Neoprene	lightweight/flexible	-	black	1 m	440 g	HS-AB-001
CH45180	Newton	45 mm	Nitrile/PVC extruded	lightweight/flexible	-	black	1 m	1250 g	HS-AB-002
CH51180	Newton	51 mm	Nitrile/Neoprene	lightweight/flexible	-	black	1 m	500 g	HS-AB-004
CH58180	Newton	57 mm	Nitrile/Neoprene	lightweight/flexible	-	black	1 m	560 g	HS-AB-008
CH64180	Newton	63 mm	Nitrile/Neoprene	lightweight/flexible	-	black	1 m	510 g	HS-AB-014
CH88180	Newton	88 mm	Nitrile BA70	smoothbore	-	black	0,5 m	-	HS-AB-017
CHE45180	Newton	45 mm	Nitrile/PVC extruded	-	-	black	1 m	1250 g	HS-AB-003
CHE50180	Newton	50 mm	Nitrile/PVC extruded	smoothbore	-	black	1 m	1250 g	HS-AB-005
CHE5045	Newton	50 mm	Nitrile/PVC extruded	connection elbow	45°	black	-	220 per piece	HS-AB-006
CHE5090	Newton	50 mm	Nitrile/PVC extruded	connection elbow	90°	black	-	230 per piece	HS-AB-007
CHE57180	Newton	57 mm	Nitrile/PVC extruded	smoothbore	-	black	1 m	1250 g	HS-AB-009
CHE5745	Newton	57 mm	Nitrile/PVC extruded	connection elbow	45°	black	-	230 per piece	HS-AB-010
CHE5790	Newton	57 mm	Nitrile/PVC extruded	connection elbow	90°	black	-	230 per piece	HS-AB-011
RM-AB-001	ATL	38 mm	-	rig refuelling hose (lightweight)	-	clear	1 m	-	-
RM-AB-011	ATL	51 mm	-	lightweight/flexible	-	black	1 m	-	-
RM-AB-012	ATL	51 mm	UV Resistant Rubber	smoothbore	-	black	1 m	-	-
RM-AB-013	ATL	51 mm	PVR reinforced	smoothbore, wire reinforced	-	clear	1 m	-	-
RM-AB-021	ATL	57 mm	-	lightweight/flexible	-	black	1 m	-	-
RM-AB-022	ATL	57 mm	-	smoothbore	-	clear	1 m	-	-
RM-AB-031	ATL	63 mm	-	lightweight/flexible	-	black	1 m	-	-
RM-AB-041	ATL	89 mm	Alloy	aluminium fire guard	-	alloy	1 m	-	-
RM-AB-024	ATL	57 mm	PVR reinforced	smoothbore, wire reinforced	-	clear	1 m	-	-
RE-AE-008	ATL	57 mm	-	45° elbow	45°	clear	-	-	-
RE-AE-019	ATL	51 mm	UV Resistant Rubber	45° elbow	45°	black	-	-	-
RE-AJ-019	ATL	75 mm	PVC reinforced	smoothbore reinforced for co-axial valve	-	clear	1 m	-	-
RE-AJ-035	ATL	38,15 mm	PVC reinforced	smoothbore reinforced for co-axial valve	-	clear	1 m	-	-
FILLFLEX38	STAUBLI	38,15 mm	PVC reinforced	smoothbore reinforced for co-axial valve	-	clear	1 m	-	-
VENTFLEX75	STAUBLI	75 mm	PVC reinforced	smoothbore reinforced for co-axial valve	-	clear	1 m	-	-