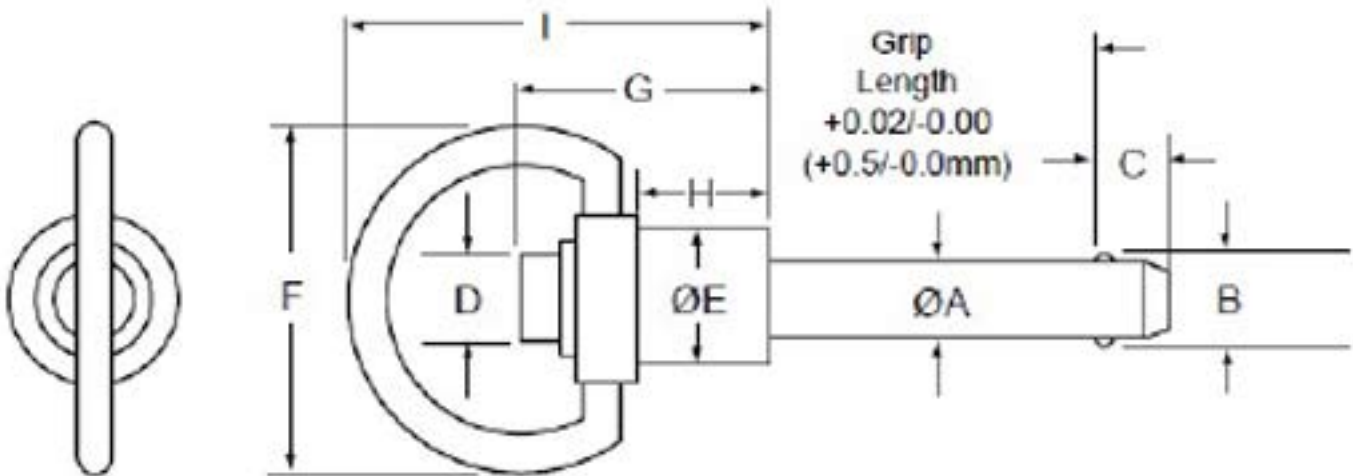


# PIP PINS

Racetech Ring Handle Kwik Lock Pins (KLP) made from heat treated 17-4 PH stainless steel to MS17987 spec.

PART NO:	DIAMETER - LENGTH
800216	1/4" X 0.50"
800217	1/4" X 0.75"
800218	1/4" X 1.00"
800219	1/4" X 1.25"
800220	1/4" X 1.50"
800221	1/4" X 1.75"
800222	1/4" X 2.00"
800224	1/4" X 2.50"
800225	1/4" X 3.00"
800227	1/4" X 4.00"
800232	5/16" X 0.50"
800233	5/16" X 0.75"
800234	5/16" X 1.00"
800235	5/16" X 1.25"
800236	5/16" X 1.50"
800237	5/16" X 1.75"
800238	5/16" X 2.00"
800240	5/16" X 2.50"
800241	5/16" X 3.00"
800243	5/16" X 4.00"
800248	3/8" X 0.50"
800249	3/8" X 0.75"
800250	3/8" X 1.00"
800251	3/8" X 1.25"
800252	3/8" X 1.50"
800253	3/8" X 1.75"
800254	3/8" X 2.00"
800256	3/8" X 2.50"
800257	3/8" X 3.00"
800259	3/8" X 4.00"



## Ring-Handle Specifications – Inch

Nom Pin Dia	ØA		±0.005 B	+0.00/-0.04 C	D	E	F	G	H	I
	Min	Max								
1/4	.2470	.2485	.289	.290	1/4	7/16	1 1/8	13/16	29/64	1 11/32
5/16	.3095	.3110	.375	.330	1/4	7/16	1 1/8	27/32	29/64	1 11/32
3/8	.3720	.3735	.440	.365	5/16	9/16	1 1/8	1	19/32	1 1/2